

INDEX

	PAGE		PAGE
A			
Abbakkadevi	53-54, 55, 58, 59, 764	Mysore Shops and Commercial Establishments Act, 1961.	650
Academy of General Education	693-694	Mysore Village Offices (Abolition) Act, 1961.	423
ACTS—			
Central Sales-Tax Act, 1956	450, 451	Mysore Village Panchayats and Local Boards Act, 1959.	517
Elementary Education Act, 1920	514	Town Improvement Act, 1865 and 1871.	515
Factories Act, 1948	652	Village Panchayats Act, 1920	514-515
Hindu Succession Act, 1956	114	Addur	720
Industrial Disputes Act, 1947	651	Administrative Divisions	5-6
Local Boards Act, 1884	512	Adult Education	484-485
Local Boards Act, 1920	514	Agrarian Movement	446
Local Boards Amendment Act, 1930	515	Agricultural Credit Societies	290-291
Local Funds Act, 1871	512	Agricultural Department	485-486
Madras Agriculturists Relief Act, 1938.	259	Agricultural holdings	128
Madras Aliyasantana Act, 1949	114	Agricultural Income-Tax	453
Madras Aliyasantana (Mysore Amendment) Act, 1961.	114	Agricultural Labourers,	127, 205
Madras Cultivating Tenants (Payment of fair rents) Act, 1956.	443	Agricultural Produce Market Committees	3112
Madras Debt Conciliation Act	259	Agricultural Research Station	156-157
Madras Debtors Protection Act, 1935.	259	Agro-based Industries	407-408
Madras Elementary Education Act, 1920.	551	Ahichchhatra	34, 80, 99
Madras Hindu Religious and Charitable Endowments Act, 1951.	504	Airways	348-350
Madras Local Libraries Act, 1948	585	Ajarkaru	720
Madras Prevention of Ejectments Act, 1954.	443	Ajilamogaru	720
Minimum Wages Act, 1948	651	Ajilas, the	59, 78, 723
Municipalities Act, 1884, 1920, 1930.	516	Aldangadi	721
Mysore Compulsory Primary Education Act, 1961.	555	Alevoor	721
Mysore Land Reforms Act, 1961	445	Alike	721
Mysore Money-Lenders Act, 1961	259	Aliyasantana	113-115
Mysore Pawn-Brokers Act, 1961	259	Alupas, the	4, 36-48, 138
Mysore Prevention of Fragmentation and Consolidation Act, 1964.	128, 445	Aluvarasa-I	39
Mysore Public Libraries Act, 1965	586	Aluvarasa-II	41
Mysore Sales-Tax Act, 1957	450	Alvakheda	35, 37
		Amateur Athletic Association	582
		Ambalpadi	721
		Anchovies	293
		Angling	189
		Animal diseases	173-174
		Animal Husbandry	169-181
		Animal Husbandry and Veterinary Services Department	486-487
		Animals, domestic	24
		Anjuman Khadimul Muslimeen	698-699
		Anupam	601
		Applied Nutrition Programme	168, 175, 642-643

	PAGE		PAGE
Arabic College	584, 764	Beedies, manufacture of	220-222, 384
Arabic College and Schools	105	Bee-keeping	240-241
Arabs, the	104	Bellare	725
Archaeology	73-79	Bellare Village Panchayat	519-521
Area	3-4, 7, 781	Belle	726
Arecanut	160-161, 167, 168, 303	Belmannu	726
Armed Reserve Police	468	Belthangady	726
Artificial insemination	174	B.E.M. Orphanages	707
Artists and Writers, number of	360	Bhadragiri	726-727
Arts, cultivation of	594-602	Bhagavata Sect	97
Assistant Commissioners	421-422	Bhagini Samaja	711
Attur	721	Bhairarasas	58, 78
Authors	590-594	Bairas	113
Auto-springs, manufacture of	223-224	Bharatiya Vidya Bhavan, Mangalore	600
Ayurvedic College	578-579	Bhoodan Movement	446-447
B			
Backward Classes, Welfare of	662-670	Bhoota cult	57, 99-100, 118, 124
Badaga-Karandur	734	Bhujabalakavi Alupendra	45
Bahubali	590	Bhutralapandya	38, 114
Baikady	726	Billavas	108
Bailangadi	721-722	Birds	24
Baindoor	4, 52, 722-723	Births and Deaths	609-612
Baindoor Port	301, 339, 501	Bisle ghat	727
Bajpe	111, 723	Blacksmithy	243-244
Bakeries	364-365	Boarding and lodging houses	362-364
Bakeries and Confectionaries	230	Boat sciene	187, 188
Balapa	723	Bola	727
Bala Sahitya Mandala	599	Boundaries, general	3
Balis	107	Brahmavara	727
Ballala-III, Hoysala	47, 48	Brahmins	108-110
Ballalas and Heggades	60	Brahmo Samaj	116
Balla-Mahadevi	46, 47	Breeding Bull Scheme	175
Balthasar	728	Bridges	329
Bamboos	310	Buchanan	66
Banana Development Scheme	167	Buddhism	95, 96
Banana Stock-barks	254-255	Buffalo-race	122-124
Bangady	723	Building stones	13, 14
Bangas, the	55, 58, 70, 104	Bukkaraya-II	50
Bankideva-I	2, 43, 44	Bunds	140-141
Bankideva-II	47, 138	Bunt or Nadava Sangha	697
Banking, development of	261-279	Bunts	108
Bantakallu	723	Buntwal	727-728
Barakur (Barakuru) 45, 49, 83, 104, 724		Buntwal Cross Road or Buntwal Muda	728
Bar Associations	479-480	Business centres	294-296
Basadis	74-77, 737, 751	Bye-products of fish	195-196
Basavappa Nayaka-I	57	C	
Basavappa Nayaka-II	57	Canara Bank	272-274
Basel Mission	103, 211, 235, 683, 707	Canara Wire and Wire Products Ltd.	224
Baskets	241-242, 311	Canara Workshops Ltd.	223-224
Basrur	52, 724-725		
Bauxite	13		

	PAGE		PAGE
Canning of fish	195	Coast-line	8
Cardamom	305	Coconut	159-160, 161-162, 166-167, 302-303
Carpentry	243	Coconut Oil Industry	232-233, 303
Cashew-nut	161-164	Cocoa Plantations	137, 167
	166, 167, 216-220, 303	Coffee	230, 304
Cast-net fishing	188	Cognisable offences	460-462, 464
Castes and tribes	105-113, 662-670	Coinage	295
Catechu, manufacture of	370	Coir Industry	234-233
Cat fish	184	Collegiate Education	563-582, 605
Catholic Associations	697	Columbo curing of fish	194
Catholics	101, 103, 119	Commerce Education	561
Catholic Women Workers' Welfare Association	711-712	Commercial Banks	261-279
Cattle	170-172	Commercial centres	294-296
Cattle fairs	178-179	Commercial Taxes Department	487-489
Central Excise	454, 509-510	Community Centres	667
Central Government	509-511	Community Development Blocks	399-403, 414
Departments		Community Development Organisation	489
Chalgeni tenants	432	Compost, manufacture of	153
Chalukyas, the	39, 40, 44	Condiments	302
Chandramakavi	591	Confectionaries and bakeries	230
Channammaji	56	Consolidation of land-holdings	128, 445-446
Charitable endowments	670-672	Constituencies for elections	675-676, 678
Charmadi	9, 728	Consumers' Co-operatives	291-292
Chautas, the	43, 50, 59, 78, 751	Conveyances and vehicles	332-333
Chennaya Baidya	99	Coondapur	729
Cheshire Home	703	Coondapur Port	299-300, 338-339, 501
Chhatras	334	Coondapur Town Panchayat	531-532
Chikkayitayi	47, 48	Co-operative Movement	282-293
Child Health Services	642	Co-operative societies, number of	285
Chitra Kala Mandir	601	Co-ordinated Agronomic Experiment Scheme	157
Chitrapadi	728	Coorg Insurrection	69-70
Chitrapura	729	Coorg, Raja of	63, 65, 69
Chitravahana-I	39-41	Copra	232-233, 303
Chitravahana-II	42	Corporation Bank Ltd.	276-277
Cholera	612, 615-616	Corundum	14
Christa Sevaka Ashram	707-708	Cotton	304
Christianity	52, 63, 70-71, 93, 95, 96, 101-103	Crescent Welfare Centre	712
Churches	101, 103, 735, 737-748	Crimes, incidence of	459-462
Cinema and drama theatres, number of	602	Criminal cases, number of	484
Cinnamon	163, 310	Crop rotation	149-150
Citizens Association	697	C.S.I. Hospital	636-637
Civil cases, number of	481-483	Cultivable waste	130
Civilian Rifle Training Centres	469-470	Cultivators, number of	127, 205
Civil Judges' Courts	476, 477	Cultural and Literary Activities	589-602
Clay	15		
Climate	25-26, 31-32, 744		
Cloudiness	26		
Clove, cultivation of	162-163		
Clupeoids	203		

PAGE		PAGE	
D		E	
Dairies	177-178, 305	Education—	
Dalita Sevashram	708	Adult	584-585
Della Valle	55, 57	Collegiate	563-582, 605
Dams and anicuts	140-141, 143-144	Commerce	561
Dattalpendra Shrimara	43	Compulsory Primary	554-556
Death Relief Fund	656-657	General	550-561
Deaths from common diseases	612	Higher	563-582, 605
Deaths, unnatural	462-463	Oriental	582-584, 737
Deccanis	105	Physical	582
Dehydration of fish	195	Pre-Primary	550-551
Demonstration Plots	154-155	Primary (Elementary)	551-556, 603-604
Density of population	86-87	Professional and Technical	569-582
Dental College	578	Secondary	557-561
Depressed classes, advance- ment of	662-670	Educational levels	550
Deputy Commissioner	416, 418-421 670	Educational and Vocational Guidance	561-562
Development, level of	405-406	Education Department	562-563
Development potentialities	406-413	Ekadal Khan Odeyar	51
Dharmashalas	334	Elasmo branches	203
Dharmasthala	105, 107, 315, 730-731	Elections, General	676-683
Diseases, common	612	Electrical Appliances, manufacture of	225
Dispensaries and Hospitals	623-639, 645-646	Electrification	208-211
District Board	71, 533-537	Elementary Education	551-557
District Court	475-476	Employees State Insurance Scheme	657-658
District Development Council	536-537	Employment, avenues of	393-398
District's income	403-404	Employment and Training Department	490-491
District Livestock Farm	176	Endowments Department	672
District Magistrate	419, 424	Engineering works, general	225
District Malaria Scheme	616	English, the	61-67, 745
District Officers, other	425-427	Entrepreneurial quality	398-399
District Police, organisation of	466-470	En tertainment-tax	453
District Special Branch Police	469	Epidemics	612
District Superintendent of Police	424, 466	Estuaries	12
Divisional Commissioner	417-418	Excise	448, 454
Dom Antao de Noronha	53	Excise Department	562-563
Domestic animals	24		
Domestic Services	365	F	
Dress	119-120	Fair price shops	315-316
Drugs Control Department	489-490	Fairs	124-125, 178-179, 315, 319-320
Dry-curing of fish	193	Fallow land	129
Dry grain crops	151-152	Family Pension Scheme	656
Dualism	97-98	Family-planning	639-642
Duarte Barbosa	52, 104, 725		
Dupa oil industry	231-237		
Dutch, the	57		
Dwaitha philosophy	97-98		
Dwelling houses	117-119		

	PAGE		PAGE
Famines and floods	138-140		
Farmers' Forum	158		
Farm Information Exchange	158		
Clubs			
Father Muller's Charitable	634-635,		
Institutions	696-697		
Fauna	23-25		
Ferries	343-344		
Ferrous and Non-Ferrous	220-223		
Industries			
Fertilisers	152,		
	227-229		
Fibres	253-254		
Filariasis	620-621		
Fine arts, cultivation of	597-599		
Fire Srevice Force	468		
Fire-wood	309-310		
Firkas (hoblies)	6		
Fisheries	181-199, 203-204		
	386, 411-412		
Fisheries College	199,		
	581-582		
Fisheries Department	492-493		
Fisheries Development	198		
Corporation			
Fisheries School	554		
Fishermen	112, 113, 183		
Fishermen's Co-operative	197, 307		
Societies			
Fishery Industry	227		
Fishing methods	185-190		
Fish-marketing	291, 306-307		
Fish Technology Station	199		
Floods and famines	138-140		
Flora	15-23		
Florists	305, 368-369		
Flowers	305, 368-369		
Food and Civil Supplies	493-494		
Department			
Food habits	121-122		
Forest-based industries	409-410		
Forest Department	494-496		
Forest produce	309-310		
Forests	15-23, 132-137,		
	310, 409-410		
Forts and palaces	78-79,		
	745-746		
Freedom struggle	69-72		
Fruits	169-305		
Fryer, English traveller	57		
Functional groups	113		
Funeral rites	108		
Furniture	118-119, 310		
		G	
		Gallantry awards	125
		Gandhi Smaraka Sangha	700-701
		Gandhi, Mahatma	71, 72, 662
		Gandhi Peace Foundation	701
		Centre	
		Ganganad fall	740
		Gangolli	731
		Gangolli river, the	11
		Garnete	14
		General Elections	676-683
		General Engineering Works	225
		Geni Wargas	431
		Geology	12-15,
			499-500
		Ghat roads	323-324
		Gift-Tax	456
		Gill-net fishing	185-186
		Goats and sheep	171
		Gold	14
		Goldsmithy	240,244
		Gommata statues	58, 73-74, 731,
			736, 766
		Goretti Hospital	637
		Goudas	110-111
		Government College	565
		Government College of	579-580
		Education	
		Government Dairy	177-178, 305
		Government Hospitals	625-634
		Govinda Pai, Manjeshwar	592
		Govinda Pai Research Centre	589
		Government T.B. Sanatorium	629
		Gramapaddhati	33, 80
		Greek notices	35-36
		Grihini Vidyalaya	572
		Guild of Service	701-702
		Gurikambala	731
		Gurpur	731-732
		H	
		Habitual offenders	465
		Haidar Ali	57, 59,
			61-63, 428
		Haiga (Haiva)	109
		Hair-cutting saloons	367-368
		Halepaikas	108
		Halmidi inscription	37
		Hamilton	57

	PAGE		PAGE
Handloom-weaving	235-237, 308-309	Income-tax	454-456 510-511
Hangarkatta Port	301, 337-338, 501	Indebtedness	258-259
Herekala	732	Indian Red Cross Society	696
Haridasas	98	Industrial co-operatives	239, 289
Harihar Raya	49	Industrial disputes	651-652
Harijan Welfare	662-670	Industrial Estates	245-249, 293
Hattiyangadi	732	Industrial facilities	245-252
Health Education	643	Industrial training	252-253
Health Unit-type		Industrial units, number of	207-208
Dispensaries	624-625	Industries and Commerce	
Department		Department	496-497
Hebbar, K. K.	597	Infant mortality	611
Hebri	732	Information and Tourism	
Heggades (a caste)	113	Department	497-498
Heggades and Ballalas	60	Inheritance	113-115
Hemmadi	733	Inland Fisheries	196-197
Higher Education	563-582, 605	Inquisition, the Portuguese	93, 102
High-yielding varieties		Insects	24
programme	154	Insemination, artificial	174
Hill Cattle Development		Inspection Bungalows	355-357
Scheme	174-175	Institute of Social Service	567-568, 694-696
Hills	8-10	Intelligence Bureau	469
Hind Kusht Nivaran Sangh	702	Intensive Agricultural Area	
Hinduism	95, 96-101	Programme	154
Hiriyadi	737	Iron-ore	14
Hiriyadka	733	Irrigation	140-146
History of the district as an		Ishwarananda Mahila	
administrative unit	4-8	Sevashram Society	706
Hoblies	6	Islam	95, 96, 103-105
Holeyas	111	Iyaz Khan	63
Home Guards	470		
Home industrial activities	234	J	
Honnakambali Chiefs	60	Jack fruit	121
Hook and line-fishing	188	Jackson, Colonel	69
Horticulture	159-169, 201-202	Jaggery, manufacture of	245, 301-302
Hosangadi	733	Jails and Lock-ups	471-473
Hospitals and	623-639,	Jaina monuments	73-78
Dispensaries	645-646	Jainism	95, 96, 97
Hotels and Restaurants	334-335, 362-364	Jamalabad (Nada)	65, 66, 79, 723, 733-734
Houses and households	91, 771	Jatras	124-125, 178-179, 315, 319-320
Hoysalas, the	44, 45, 47	Jayanti villages	403
Humidity	26, 31	Jayasimha—I	43
		Joint-family	115
I		Journals	683-691
Ibn Batuta	49, 104, 744	Judges and Laweyrs,	
Ice plant and cold storages	194-195	heritage of	478-479
Immigration	87-89		
Immoral traffic, suppression of	466, 469		
Implements, agricultural	146-147		

	PAGE		PAGE
Land-holdings	128, 445-446, 782, 783	Mahapradhana Bachanna	50
Land reclamation	146	Maharashtra Apex Corporation Ltd.	281
Land Reforms	442-446	Mahatma Gandhi Memorial College	565-567
Land Revenue collection	441-442, 457	Mahila Mandals	234, 711-715
Lands, classification of	130-131	Mahila Sabha	712-713
Land Tribunal	475	Mahila Sabha Library	586-587
Land-utilisation	129, 200-202	Makkalkattu	114
Languages	92-95	Makkikatte (Mekkekattu)	742
Large-scale industry	227-229	Malali	742
Laterite	13	Malaria	612, 616-618
Laundries	336-337	Malavas	113
Law College	580-581	Malaya-Dannayaka	50
Lawyers and judges, heritage of	478-479	Male-Kudiyas	112
Learned professions	360-361	Malpe Port	300, 336-337, 500-501
Leather Industry	245	Malpe town	742-743
Legal profession	361	Mandarathi	743
Legends	33-34	Mangala Gangothri Post-Graduate Centre	568
Leprosy	618-620, 635-636	Mangalore Chemicals and Fertilisers Ltd.	227-229
Libraries and Museums	585-589, 606	Mangalore Cheshire Home	703
Life Insurance	281	Mangalore City	39, 49, 67-68, 71, 78-79, 295, 377-378, 743-750
Lift irrigation	143, 145	Mangalore City Municipality	522-528
Lime-shell	14	Mangalore Harbour Project	339-342, 412
Lions and Rotary Clubs	708-711	Mangalore—Hassan Railway Line	346-348, 412-413
Literacy, growth of	547-550	Mangalore Port	298-299, 335-336, 541-542, 545
Literary and Cultural activities	589-602	Mangalore Port Trust	541-542, 545
Livelihood pattern	206, 359, 372-375	Mangalore Productivity Council	255
Livestock Farm	176	Manipal	719, 758-759
Livestock population	171-172, 784-787	Manipal College of Education	580
Living, cost of	389-390	Manipal Engineering College	573-574
Living, standard of	389-393	Manipal Finance Corporation	281
Local Boards	512-514	Manipal Power Press	226, 227
Location of district	3	Manures	147-148, 152-153
Lock-ups	469	Maramma Aluvarasar	42
Loka Seva Vrinda	698	Maravanthe	750
Long-line fishing	188-189	Marginal Farmers and Agricultural Labourers Schemes	155, 175
M			
Mackerel	183-184, 203		
Macleod, General	64		
Madhvacharya	97-98, 726		
Madhva mathas	98		
Magistrates	419, 421, 422, 424, 474-475, 477, 478		
Mahabala Deva	50		

	PAGE		PAGE
Nellikar	754	Pandarideva	51
Nemas and Kolas	124	Pandya Pattiyodeya	44
Netravati river, the	10-11	Panemangalore	755
Newspapers and Periodicals	683-691	Panje Mangesh Rso	592
Newspaper Publishers and Printers Ltd.	226	Paramadeva	591
Nidambooru	754	Parapali Nayaka	45, 82 83
Nidhis and Kuri Funds	257	Parashurama	33
Nilavara	754-755	Parenki	755
Non-Co-operation Movement	71-72	Parthy Subba	591
Non-ferrous and Ferrous industries	222-223	Partition of Kanara	70
No-tax campaign	66-69	Pattiyodeya	44
Nurseries and Farms	164-165	Pepper	162, 166, 167 168
Nursing School	579	Peradur	756
Nutmeg, cultivation of	163	Per-capita income	404
Nutrition Programme, Applied	168, 175, 642-643	Perches	204
		Periodicals and Newspapers	683 691
		Perpetual Help Hospital	637
		Pests and diseases of plants	156
		Pharmacy College	577-578
		Physical Education	592
		Piggery	171, 155
		Pine-apple Development Scheme	167, 168
		Pine-apple Fibre Centre	253-254
		Plague	612, 616
		Plantation Crops Research Institute	164
		Poets and other writers	590-594
		Polali	756
		Police lock-ups	469
		Police set-up	466-470
		Police welfare	470-471
		Political awakening	71-72
		Political parties	676-682
		Polling stations	683
		Pombadas	113
		Poor Service Lodge	699
		Population 4, 7, 87-96, 771-781	
		Agricultural	126-127
		By mother-tongues	94-95
		By religions	95-96
		By sex 87, 90-91, 91, 780	
		Density of	86-87
		Drift in	89-90
		Growth of	87
		Houseless	91-92
		Institutional	92
		Movement of	87-89
		Urban and Rural	91, 781
		Ports Department	500-501
		Portuguese, the	1, 51-57,
			60-62, 101, 102, 745

O

Occupational classification	206, 359, 372 375, 771 774
Occupational groups	113
Offenders, habitual	465
Offenders, probation of	662
Oil industry	231 233, 238, 240 303, 313, 408-409
Oil sardines	203
Oil seeds	304
Old-age Pension Scheme	658
Oriental Education	582 584
Ornaments	120
Orphanages and Scvashramas	703 708

P

Paddanas	34, 93
Paddy	150 151, 301, 316
Padmanabha	591
Padavu	755
Padubidri	755
Paduthonse Village Survey of	375 376
Pai, T. M. A.	566, 693
Paintings	79, 597
Pajakakshetra	97, 726, 742
Palaces and Forts	78 79, 745
Pallavas, the	41
Panambur	755
Panchayat Boards	513 514

	PAGE		PAGE
Post-Graduate Centre	568	Ramasamudra	737
Post Office Savings Bank	279	Rampani net	187
Posts and Telegraphs	350-351, 511	Ranasagara	41
Potentialities of Development	406-413	Rananjaya	43
Pottery	244-245	Ranga Rao, K	116, 662
Poultry	171, 179-181	Rashtrakutas, the	42, 43, 105
Power supply	208-211	Ratnakaravarni	594
Pranthya	756	Recreation	122-120
Prawns	184	Red Cross Society	696
Pre-Primary Education	550-551	Red-oil palm	137
Preserved foods	121	Regional Engineering	
Presses, Printing	225-227	College	574-576
Prices	378-381	Regional Poultry Farm	179-180
Primary Education	551-556, 603-604	Registration of documents	449, 503-504
Primary Health		Religions	95-105
Centres	624-625, 645-646	Religious and Charitable	
Primary Land Development		Endowments Department	504-505
Banks	287-288	Remand Home	469, 659-661
Prithvisagara	41-42	Repatriates from Sri Lanka	135, 137
Probation of offenders	662	Representation in State and	
Productivity Council	255	Union Legislatures	675-683
Professional and Technical		Reptiles	23-24
Education	569-582	Reserve Police Force	468
Prohibition	465-466, 658-659	Reservoir Projects	141
Property lost and recovered	464	Restaurants and Hotels	362-364
Protestant sect	103	Rest houses	334, 355-357
Provident Fund Scheme for		Revenue collection	441-442, 447-457
Employees	655	Revenue Inspectors	422-423
Ptolemy	35, 36, 38	Revenues from major sources	404-405
Public Administration		Revenue sub-divisions	5-6
Service	359-360	Rice	150-151, 301, 316
Public Transport	330-332	Rice mills	230
Public Works Department	501-503	Riots	462
Pulses	302	Ritual dances	100, 124
Pumpsets	145-146	Rivers	8, 10-12
Puttige	59, 756	Road-lengths	326-329, 352-354
Puttur	757	Rock formations	12-13
Puttur Taluk Development		Roman Catholics	101-103, 119
Board	537-541	Rotary and Lions Clubs	708-711
Puttur Town Panchayat	532-533	Rubber industry	245
		Rubber plantations	135-137, 495-496, 502
		Rural Communications	
		Programme	327-329
		Rural electrification	210-211
		Rural houses	117-118
		Rural Industrialisation Scheme	239
		S	
		Sadashiva Nayaka	51, 54
		Sadashiva Rao Karnad	71, 72; 662

R

Radio sets	351
Railways	344-348
Rainfall	25, 27-30, 131, 138
Raita Sanghas	446
Raiyatwari system	433
Rama Bai, Pandita	590
Rama Bhoja	2
Ramarajya Kshatriya	
Seva Sangha	699

	PAGE		PAGE
Sales-tax	450-451	Shivappa Nayaka	55-56
Saletore, B.A.	592	Shivapura	759
Saligrama	757	Shops and Commercial Establishments	388-389, 650-651
Salt water exclusion dams	144	Shri Lakshminarayana Sangeetha Kala Shale	601
Saluva Narasimha	51	Shrimad Bhuvanendra Shilpa Shala	598
Saluva Narasimha—II	51	Shriman Madhva Siddhanta Prabodhini Samskrita College	583-584
Salva	590	Shreemanthibai Memorial Government Museum	587-588
Samadhis	77-78	Shri Ramakrishna Mission Balakashrama	707
Samagaras	112	Shri Ramakrishna Seva Samaj	705-706
Samaja Mandir Sabha	700	Shri Shraddhananda Sevashrama	704-705
Samskrita learning	590	Shri Vani Seva Sangha	700
Samskrita Pathashalas	583-584	Shri Veera Maruthi Vyayama Shala	582
Sandalwood oil	310	Shri Vivekananda Sangha	701
Sangeetha Kela Prasarak Sangha	601	Siddhantha Prabodhini Sanskrit College	589
Saraswat Seva Samaj	699-700	Sikhs	95
Sardines	184, 203	Silca sand	14-15
Sarva Seva Sangha	697	Sillimanite	15
Satyagraha	71-72	Silver bellies	184
Satyaputras	34-35	Sitanadi river, the	11
Savanoor	757	Sitanadi village	179
Savantas, the	59	Skates	203
Saverapura Orphanage	708	Small-pox	612-615
Sayyed Madani Arabic College	584	Small-scale industries	211-227
Scheduled Castes and Tribes	105-107, 113, 663-670	Snuff-making	234
Scheduled Tribes	106	Soap-making	233
School Health Services	643-644	Soapstone	15
School of Music and Fine Arts	602	Social evils	115-116
Science Foundation	589	Soil erosion	22, 146
Scientific agriculture	152	Soils	131-132
Scombroids	203	Soil testing laboratory	155-156
Sea-borne trade	297-298	Someshwara	759
Seasons, agricultural	148	Somaladevi	722
Secondary Education	557-561	South Kanara Central Co-operative Bank Ltd.	286
Security cases	465	South Kanara District Co-operative Agricultural Development Society	286-287
Seed Farms	153-154	Soyideva Alupendradeva	47
Seining	186-187	Special Sub-jail	471-472
Seer-fish	203	Spices	137-138, 162-163, 166, 167-168, 302, 408-409
Sessions Judge's Court	476		
Sevashramas and Orphanages	703-708		
Shaivism	96		
Shandies	314-315		
Shankaranarayana	757-758		
Sharada Press	226		
Shark-liver oil	196		
Sharks	185, 203		
Shenoy, G. S.	597		
Shenoy, R. G.	598		
Shiriyara	758		
Shiroor	758		
Shirva	758		
Shishila	758		
Shivalli	96, 109, 590, 734-735, 758-759		

	PAGE		PAGE
Spirit-worship	57, 99-100, 118, 124	Tailoring	365-366
St. Agnes College	564-565	Tala-Maddale	595
St. Aloysius College	79, 564	Taluk Boards	513
St. Ann's Training College	579	Taluk Development Boards	537-541
St. Antony's Orphanage	705	Taluks	5-7, 775-777
St. Joseph's Asylum	703-704	Tanks	140-141, 142-143
St. Joseph's Asylum		Taranath, Pandit	592
Industrial Workshops	225	Taxes other than land	
St. Joseph's Leprosy		revenue	447-456
Hospital	635-636	T.B. Association	702
St. Joseph's Orphanage	708	T.B. Sanatorium, Mudushedde	629
St. Mary's Isles	759-760	Tea	304
St. Mary's Mobile Dental		Teacher's Training Institutions	579-580
Hospital	638	Technical and Professional	
St. Paul's Orphanage	706	Education	569-582
St. Philomena's Orphanage	706	Telegraphs	351
St. Rita's Orphanage	707	Telephones	351
Stambhas	77, 737	Temperature	25-26, 31-32
Standard of living	389, 393	Tenures	431-433
State Accounts Department	505	Territorial changes	7-8
State Electricity Board	509	Textiles, manufacture of	229
State Excise	448, 454	Thulu-Karnataka Mogaveera	
State Insurance Scheme for		Shree Jnanodaya Samaj	699
Employees	657-658	Tile clay	15
Statistical Office	506	Tiles	211-216, 307, 308
Stone-workers	369-370	Timber and firewood	309-310
Streams	10-12	Timmanna Ajila—IV	59
Stree Seva Samithi	712	Tipu Sultan	62, 63-65, 102, 132, 429, 728, 745
Strikes and Lock-outs	652-653	Tobacco	304
Students and other Youth		Todalli	762
Organisations	718-719	Tolaharas, the	59-60
Sub-Divisions	5-6	Tombs	77-78
Sub-Jails	471-473	Tonse—East	735
Subramanya	9, 99, 178, 315, 741	Tonse—West	762
	760-761	Tothathodi	762
Sugarcane	151, 155, 301-302	Tourist facilities	333-335
Sullia	761	Town Panchayats	531-533, 543-544
Sultan's Battery	745-746	Town Planning Department	507
Suralu	761	Towns	778-779
Surathkal	761	Trachoma	623
Survey Settlements	433-441	Trade Associations	317
Survey, Settlement and		Trade and Commerce	113
Land Records Departments	506-507	Trade Unions	653
Swarnanadi river, the	11	Traditional harmony	105
Syed Sheriful Madani Dargah	764	Traditions	33-34
Syndicate Agriculture		Travellers Bungalows	355-357
Foundation	157-158	Trawling	189
Syndicate Bank	269-272	Treasury Department	507-508
		Tribal Development Blocks	669
T		Tribes	106, 294-320
Taccavi loans	260-261	Tubectomy and Vasectomy	638-640
Tahsildars	422		

	PAGE		PAGE
Yakshagana Training Centres	596	Young Men's Christian	
Yelluru	767	Association	699
Yenmoor	767	Youth Clubs	715-719
Yennur	765-766	Yuvaka Sanghas	715-719
Yermalu	767		
Young Farmers' Association	158-159	Zamorin of calicut	53, 104

ADDENDA

<i>Page No.</i>	<i>Add</i>																														
	Area																														
4 after first para 86 second para after the third sentence	In respect of area, the correct position is as follows :— <hr/> Provisional geographical area of South Kanara as computed by Survey of India. } 8441.0 Sq. kms. <hr/>																														
	Taluk-wise reporting area of South Kanara for land-utilisation purposes as worked out by the State Survey Department and local bodies :—																														
	<table border="1" style="width: 100%; border-collapse: collapse;"> <thead> <tr> <th style="text-align: left;"><i>Sl. No.</i></th> <th style="text-align: left;"><i>Name of taluk</i></th> <th style="text-align: right;"><i>Sq. kms.</i></th> </tr> </thead> <tbody> <tr> <td>1.</td> <td>Belthangady</td> <td style="text-align: right;">1,375.2</td> </tr> <tr> <td>2.</td> <td>Buntwal</td> <td style="text-align: right;">715.7</td> </tr> <tr> <td>3.</td> <td>Coondapur</td> <td style="text-align: right;">1,559.8</td> </tr> <tr> <td>4.</td> <td>Karkal</td> <td style="text-align: right;">1,347.3</td> </tr> <tr> <td>5.</td> <td>Mangalore</td> <td style="text-align: right;">560.6</td> </tr> <tr> <td>6.</td> <td>Puttur</td> <td style="text-align: right;">1,004.2</td> </tr> <tr> <td>7.</td> <td>Sullia</td> <td style="text-align: right;">826.6</td> </tr> <tr> <td>8.</td> <td>Udipi</td> <td style="text-align: right;">929.1</td> </tr> <tr> <td></td> <td style="text-align: right;">Total ..</td> <td style="text-align: right;">8,318.5</td> </tr> </tbody> </table>	<i>Sl. No.</i>	<i>Name of taluk</i>	<i>Sq. kms.</i>	1.	Belthangady	1,375.2	2.	Buntwal	715.7	3.	Coondapur	1,559.8	4.	Karkal	1,347.3	5.	Mangalore	560.6	6.	Puttur	1,004.2	7.	Sullia	826.6	8.	Udipi	929.1		Total ..	8,318.5
<i>Sl. No.</i>	<i>Name of taluk</i>	<i>Sq. kms.</i>																													
1.	Belthangady	1,375.2																													
2.	Buntwal	715.7																													
3.	Coondapur	1,559.8																													
4.	Karkal	1,347.3																													
5.	Mangalore	560.6																													
6.	Puttur	1,004.2																													
7.	Sullia	826.6																													
8.	Udipi	929.1																													
	Total ..	8,318.5																													
9 under mountains	The Kudremukh actually lies within the territorial limits of the Chikmagalur District.																														
36 after line No. 14	(i) (a) There can be said to be also a short Hoysala period;																														
91 second para, after sixth line	NEW DEFINITION OF HOUSES AND HOUSEHOLDS: The modified definitions of Houses and Households as per the 1977 census are :																														

Page No.

Add

Census House : A census House is a building or part of a building having a separate main entrance from the road or common court yard or staircase, etc., used or recognised as a separate unit. It may be inhabited or vacant. It may be used for residential or non-residential purpose or both.

Household : A household is a group of persons who commonly live together and would take their meals from a common kitchen unless the exigencies of work prevented any of them from doing so. There may be one member, two member or multi-member households for census purposes; each of these types regarded as a 'Household'. Again, there may be a household of persons related by blood or household of unrelated persons, the latter are Boarding Houses, Hostels, Residential Hostels, Orphanages, Rescue Homes, Ashramas, etc. These are called 'Institutional Households'.

A census house occupied by a household makes it an occupied residential house. Even if household used the census house in which it lives for any non-residential purposes such as business, workshop, etc., it is still counted as an occupied residential house. Thus census houses used as residence-cum-shop, residence-cum-workshops, etc., are also treated as occupied residential houses.

101 in line 2,
after
the word
Chidananda

and Swami Krishn^{an}anda Saraswati.

383 after the
last
statement

Statement showing the revised minimum rates of wages of agricultural labourers fixed by the State Government and given effect to from the 2nd October 1973.

Page No.

Add

Class of employment	All inclusive minimum rates of daily wages		
	Dry land	Wet land	Garden land
	Rs. P.	Rs. P.	Rs. P.
CLASS A.—			
1. Ploughing	}	3.15	3.75
2. Digging			
3. Harrowing			
4. Sowing			
5. Inter-culturing			
6. Irrigation or watering			
7. Uprooting			
CLASS B.—			
1. Manuring	}	2.50	2.80
2. Transplanting			
3. Weeding			
4. Reaping—			
(a) Harvesting			
(b) Threshing	3.40		
(c) Winnowing			
5. Picking in case of cotton.			
CLASS C.—			
1. Cattle, sheep and goat grazing.	1.30	1.30	1.30
CLASS D.—			
1. Harvesting in areca and coconut gardens	}	3.15	3.75
2. Peeling the coconuts and arecanuts			
3. Trimming and spraying in arecanut and coconut gardens			
4. Any other operations			

Page No.

Add

The monthly minimum rates fixed for persons working as attached labour (Adolescents and children) employed under class 'A' are Rs. 37.50 with food and clothing and Rs. 74.85 without food and clothing per month. The corresponding rates under class 'B' are Rs. 24.30 with food and clothing and Rs. 37.50 without food and clothing and under Class 'C' Rs. 12.50 with food and clothing and Rs. 37.50 without food and clothing per month. In case where bullocks are supplied by a worker, he will get Rs. 3.75 in addition to his wages.

Estate Duty :

442 as penultimate paragraph

There is an Estate Duty-cum-Income-Tax circle for the districts of Chikmagalur, Coorg, Hassan, Shimoga and South Kanara with its headquarters at Mangalore. No tax is collected on the first Rs. 50,000 and tax is collected at 4 per cent to 85 per cent from Rs. 50,000 and above at various levels. The appellate authority for the entire state of Karnataka is the Appellate Controller of Estate Duty, Bangalore. There were 380 assesses for the Circle during the year 1972-73 and the amount collected was Rs. 14.36 lakhs. In cases of default, attachment of movable and immovable properties is resorted to.

445 at the end of the third paragraph

The Mysore Land Reforms Act, 1961 is now (1973) being further amended.

519 as footnote

The village of Bellare was selected for preparing a Village Survey Monograph by the Census authorities in 1961

Housing :

542 after the last paragraph

In order to mitigate the acuteness of the shortage of housing, particularly in the urban areas, the Karnataka Housing Board, Bangalore, which was constituted on 1st June 1956, has

*Page No.**Add*

been constructing houses under several housing schemes such as Subsidised Rental Housing Scheme, Low Income-Group Housing Scheme and Middle Income-Group Housing Scheme. The amount spent so far (1972-73) by the Board in providing housing facilities under the above mentioned schemes in the district was as follows :—

<i>Sl.No.</i>	<i>Schemes</i>	<i>Rs. in lakhs</i>
1.	Subsidised Rental Housing Scheme	7.09
2.	Low Income-Group Housing Scheme	10.23
3.	Middle Income-Group Housing Scheme.	2.27
	Total ..	19.59

There is a district-level Office of the Board, headed by an Executive Engineer at Mangalore with necessary technical, ministerial and class IV staff numbering 20 in all, as in November 1973. The progress of work achieved in South Kanara District as in 1971-72 was as under :—

<i>Sl. No.</i>	<i>Place</i>	<i>Houses pro-grammed for 1971-72</i>	<i>Houses under const-ruktion</i>	<i>Total</i>
1.	Belthangady ..	40	..	40
2.	Karkal ..	40	5	45
3.	Mangalore ..	550	..	550
4.	Sullia ..	30	10	40
5.	Puttur ..	60	25	85
6.	Udipi ..	136	69	205
	Total ..	856	109	965

Page No.

Add

- 724 under Barakuru Hosalu, which is a hamlet of Barakuru, has what is called the "Kattale Basadi", which consists of two ruined stone-built Jaina *mantapas* and a small Shiva temple containing a *Linga*. From the fact that there are two *dwarapalakas* holding attributes of Vishnu, it appears that it was probably a Vaishnavite temple. According to the Archaeological Survey of India, these temples can be roughly dated 15—16th century A.D.
- 731 *Gurikambla* : *Gurikambla*, which is a hamlet of the Muduperar village, (T. Mangalore, P. 3,323) is about 20 kms. from Mangalore City. It has a *dargah* where the mortal remains of the saint Asraruddin lay buried. Thousands of devotees visit the *dargah* during the annual *urs* celebration.
- 741 under Kadri in line 1 after the word height. (The epigraph reads as follows : *Lokeshvarasya devasya pratishthamakarotprabhuhu Shrimat Kadrika namni viharesu manohare* || From the term *vihara* used here, it can be said that it was a Buddhist place of worship. Further, as pointed out by Dr. Benoytosh Bhattacharyya in his "The Indian Buddhist Iconography", one of the *sadhanas* which describe Lokeshvara says that the deity has three ears and three faces. In view of these facts, it seems that Lokeshvara here is a Buddhist deity.)
- 744 at the end of the fourth paragraph The town ~~may~~^{was} also called Mayikal and Kodiyal. According to Saletore, Mayikal is derived from Maya-Kala or Maya-kana signifying the abode of goddess-Maya. He seems to identify this goddess with Mangaladevi whose temple still exists in the city and the Buddhist goddess Tara Bhagavati. The Muslims had continued to call this place as Mayikal. The northern part of the city is still called Kodiyalaguttu.

 Page No.

 Add

746 under Puttige as second para The temple of Somanatha has a fine idol of a rare type, made of a semi-precious gem stone. According to the Archaeological Survey of India, an important element of this image is that it avoids any identifiable iconographic traits of divinities and that it might possibly represent Yogishvara Vishnu (as Krishna). It might belong to the close of the sixteenth or early seventeenth century A.D. Locally, it appears to have been mistaken to be an image of Parvathi performing penance.

Dr. P. Gururaja Bhat is of the view that the icon is of Akshobhya Bodhisattva and of about the 13—14th Century A. D. (*Vide* Souvenir of the Bharathiya Vidya Bhavan, Mangalore Kendra—1972.)

750 Manipal (as marginal heading)

764 Very near to the Shri Krishna Math at Udipi, there is a temple dedicated to Ananteshwara (Shiva). It is one of the best Shiva temples of South Kanara district. Originally this temple seems to have been built about 8th or 9th Century. There are four small shrines dedicated to Skanda in the premises of the Ananteshwara temple. The upper ceiling of the temple has been covered with copper plates whereas the lower one has thick and big black stone slabs. The stone pillar in front of the temple belongs to the Vijayanagara period. The image of Shas^{tr}ra in the temple is elegantly carved. A lithic record of Bukkaraya belonging to 1336 A.D. mentions the name of this Ananteshwara temple along with the Chandramoulishwara temple.

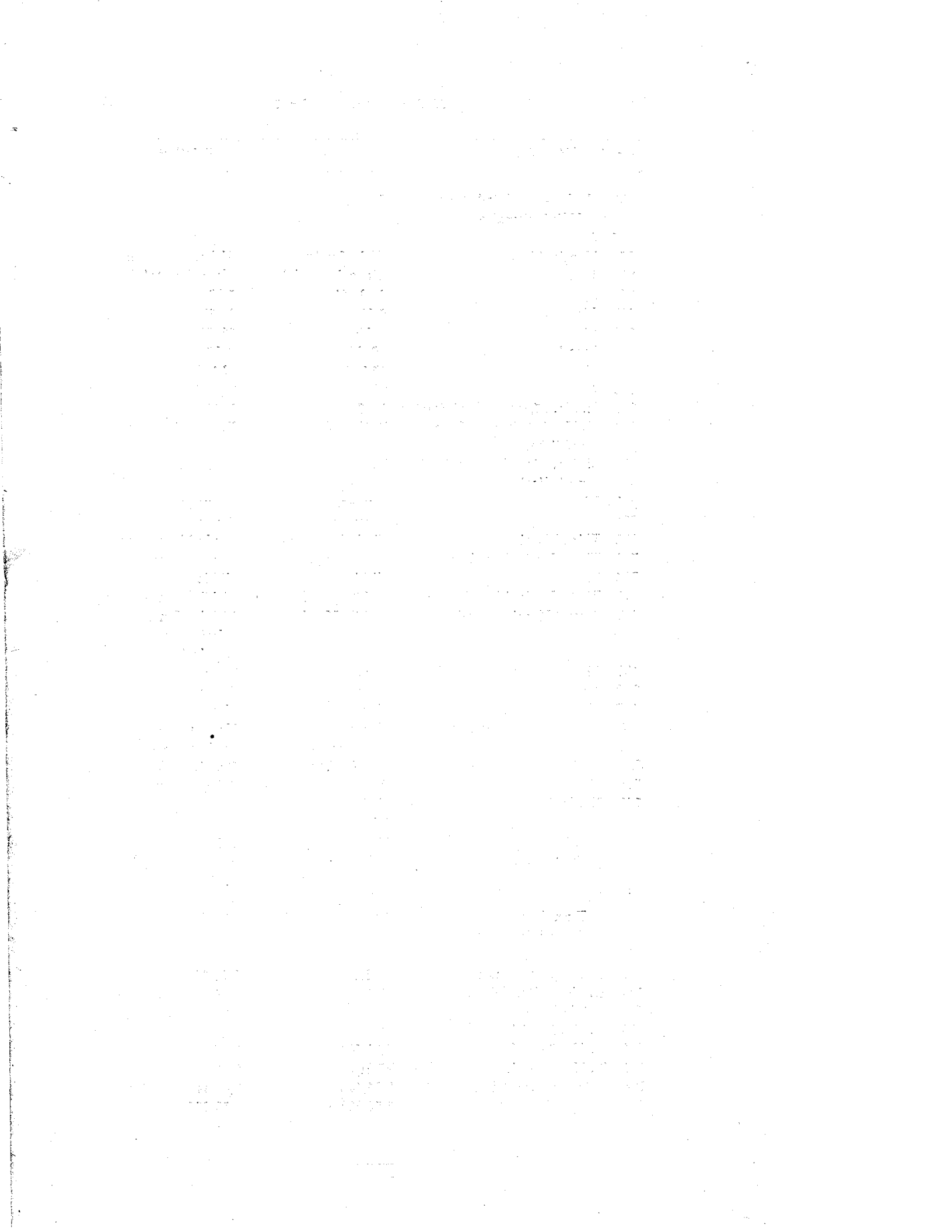
CORRIGENDA

Page No.	Line No.	For	Substitute	
	3	Last line in Footnote	May	May and June
	7	11 against Puttur	1,03288	1032.48
	7	16 against Total	8,436.32	8,435.58
	10	28	flooding	flooding
	30	Table 3 (headline)	from 1951-70	from 1951-1972
	38	12	derivass	derives
	39	2nd marginal heading	Chitravahana I	Chitravahana I
	45	42	sovereign	Sovereign
	47	7	seceeded	succeeded
	49	1	whcih	which
	49	42	Fakanur'	'Fakanur'
	54	29	emerge	emerged
	59	1st Marginal heading	savantas	Savantas
	77	20	Haleyangadi	Hiriyangadi
	77	22	Haleyangadi	Hiriyangadi
	106	Table for 1971 under females	38,138	8,138
		Total	50,002	51,002
		Urban total	14,100	15,100
		Total	99,687	1,00,687
	107	Line 5	59,266	59,966
	128	18	,while solar and luni- solar systems prevail	, while luni-solar system prevails
	127	Table 2—District total under total No. of workers	7,30,851	7,29,891
	130	32	yields	yield
	132	16	ctothed	clothed
	134	Marginal heading	products	produce
	137	2nd Marginal heading	Cocoa plantation	Cocoa plantations
	137	35	Carotine	Carotene
	151	6-7	back-water	back-waters
		Last line	rice	rise
	154	Line 29 achievement	2381.71	2381-77
	154	Line 30	Total 10,450-96	10,480-96
	158	Last marginal heading	young Farmer's	Young Farmers'
	177	1	kulashekara	Kulashekhara
	183	18	hese	there
	185	11	significane	significance
	198	13	storage	storages
	198	19	insulted	insulated
	200	Table total under column 4	68,192	68,092
	203	16	Scombriods	Scombroids
	203	17	Mackeral	Mackerel
	205	Under total No. of workers	88,610	88,660
	206.	Marginal heading	Institutional	Industrial
	212	Marginal heading	Process	Processes
	223	14	The Canara Work- shop Ltd	The Canara Work- shops Ltd
	223	15	1043	1943

<i>Page No.</i>	<i>Line No.</i>	<i>For</i>	<i>Substitute</i>
250	2	entrepreneurs	entrepreneurs
250	6th item under last column	Rs. 1,000	Rs. 2,000
252	Marginal heading	Facilities	Facilities
257	37	The Holi, system	The Holi system
258	First marginal heading	Indebtednes	Indebtedness
268	First marginal heading	Rural banks	Rural branches of banks.
271	Marginal heading	Banks mergers	Banks' mergers
276	19	Chitmdurg	Chitaldrug
276	43	mered	merged
301	Third marginal heading	Trade in products	Trade in agricultural commodities.
302	3	Porbander in Bombay	Porbander and Bombay.
302	10	grociars	grocers
303	13	exoprted	exported
304	7	Tamil Nadu district	Tamil Nadu districts
319	Statement item 5 under Coondapur taluk.	Kumbashi	Kumbhashi
319	Statement item 11 under Karkal taluk.	Kadandala	Kadandale
320	Statement item 6 under Udipi taluk.	Kadavor	Kodavoor
320	Item 7 under column 4, in Udipi taluk.	Janardhana	Janardana
322	7	Posses	Passes
336	42	Confluence	month
357	S.No. 17	500 k.ms.	500 Metres
364	26	house	hours
365	Marginal heading	DOMOSTIC	Domestic
381	38	Matters	masters
392	43	met	meet
392	33	enviorns	environs
423	Last but one line	Village officers	Village Offices
433	13	1972	1792
443	29	persistant	persistent
445	4	discessed	discussed
449	9	Tehsil	Tahsil
456	7	2,700	2,770
456	12	1,975	1,971
474	32	Stationery	Stationary
481	Last line under total for disposal.	51,132	51,072
481.	Last line under total receipts.	8,83,245	8,93,245
482	Last line total under No. of cases decided totals.	16,951	19,951
483	Last line total for disposal	86,061	86,261
484	Line 5—	sharges	charges
484	Line 16—under total charges	2,40,53	2,40,35
484	Line 18 under total charges	2,51,34	2,51,341
494	7	Demorcation	Demarcation

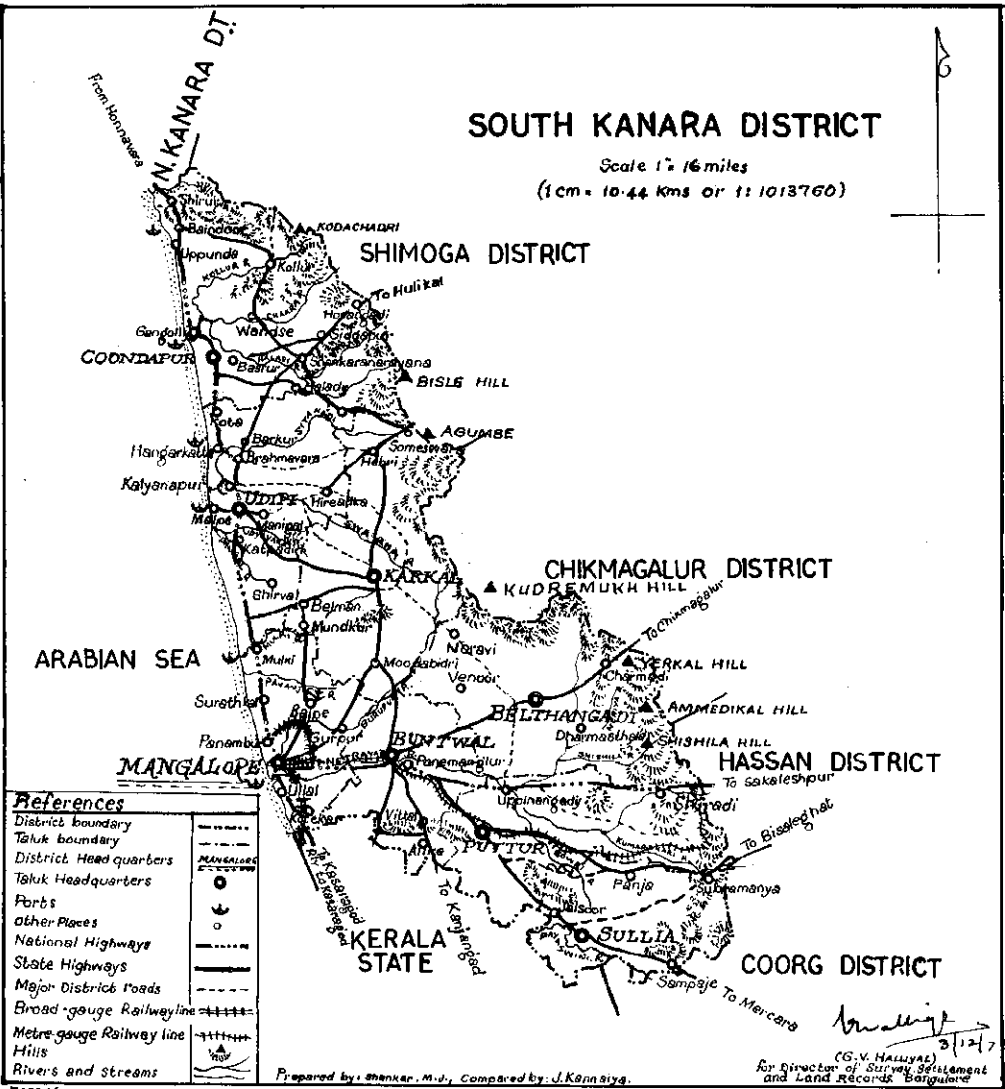
<i>Page No.</i>	<i>Line No.</i>	<i>For</i>	<i>Substitute</i>
495	33	Chairmen	Chainmen
511	First marginal heading	Post and	Posts and
511	Second marginal heading	Mineral and Metal	Minerals and Metals
522	1	carrying	carrying
527	Table—last item	1,15,296.10	1,15,296.19
528	6th line from below	Committeess	Committees
530	29	1967-70	1969-70
543	Fifth line under Receipts for 1971-72.	49,338	49,238
543	Eleventh line under Receipts for 1970-71.	41,398	41,390
546	28	1882	1822
547	Marginal heading	Growth of literary	Growth of literacy
548	4	82.2 percent	82.82 percent
	Table against Mangalore under females.	21,681	21,691
	32	Sir Mevered	Sir Maverol
560	Table Sl. No. 3 against 1970	73.86	73.80
570	21	ladies	to ladies
576	Table against 1971 under Civil Total	24	234
589	40	testmony	testimony
589	42	litterateurs	litterateurs
590	16	all-India	all-India and
604	Table II No. 5, last Column	30,078	30,079
	Table total 6th column	89,672	89,673
	Table total Last column	1,57,85	1,57,806
604	Foot note 1st Line	Inssruction	Instruction
611	Foot note last line	“Knowledge is power”	“ Knowledge is Power ”
615	Table under total column against 1967	3,11,191	3,21,191
	do 1968	2,96,936	3,46,936
	do 1969	3,68,246	3,78,246
	do 1970	4,13,609	3,13,609
	do 1971	2,69,296	1,69,296
619	16	Hindu	Hind
622	Table Total	62,782	65,782
623	1	helminths	helminthiasis
643	40	gramaphone	gramophone
649	Marginal heading	Labour Law	Labour Laws
652	12 He is assisted	He is assisted	He is assisted in his executive duties by an Assistant Inspector of Factories.
658	23	licenced	licensed
662	6	Prabation	Probation
663	Table—Scheduled Castes—Udipi, Females.	71,500	7,500
667	37	propaganda	propaganda
672	Marginal heading	Wakf Instituion	Wakf Institutions
676	4	Mangalore taluk	Mangalore taluk ;

<i>Page No.</i>	<i>Line No.</i>	<i>For</i>	<i>Substitute</i>
663	Table—Scheduled Castes— Udipi, Females.	71,500	7,500
667	37	propaganda	Propaganda
672	Marginal heading	Wakf Institution	Wakf Institutions
676	4	Mangalore taluk	Mangalore taluk
679	23	6,03,897	5,98,897
681	Line 24	2,071	2,031
682	Line 14	2.16	32.85
	Line 15	32.85	2.16
	41	45,526	42,526
683	7	38,814	39,814
689	Sl. No. 97, year of publication	1956	1966
690	Sl. No. 127, Name of the publisher	B. V. Balaga	B. V. Baliga
690	Sl. No. 161, Name of the periodical	Nadenudi	Nadanudi
691	17	Souvenrr	Souvenir
691	18	Souvenrr	Souvenir
699	Third Marginal heading	Thulu-Karnatak	Thulu-Karnataka
703	First Marginal heading	Sevashrama	Sevashramas
705	35	all his	all his
711	First Marginal heading	Mahila Mandal	Mahila Mandals
713	Second Marginal heading	Mahila Mandal	Mahila Mandal, Baindoor
720	Footnote	Population	Population
722	36	imgaes	images
737	21—22	Januray	January
745	29	Managalore	Mangalore
750	First Marginal heading	Marvanthe	Maravanthe
752	20	hedquarters	headquarters
754	Footnote	Dr. K. V. Ramhes	Dr. K. V. Ramesh
766	35	Subrhmanya	Subrahmanya
772	Sl. No. 1	Under Column	
	First line	22	169
	Second line	Column	1695
		22	169
772	Sl. No. 1	Column	
	First line	23	4405
	Second line	Column	440
		23	4405
780	Sl. No. 2, persons for 1971	2,26,687	2,26,787
783	Sl. No. 1, item No. 23	1,495	1,495
783	Total—item 23	7,836	7,809
784	Sl. No. 2—Col. 5	15,090	65,090
784	Sl. No. 5—Col. 4	3,81,615	38,615
784	Sl. No. 8—Col. 5	87,310	87,313
784	Total—under Col. 4	3,05,443	3,05,446
784	Under Col. 5	5,50,862	5,50,865



SOUTH KANARA DISTRICT

Scale 1" = 16 miles
(1 cm = 10.44 kms or 1: 1013760)

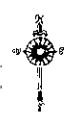
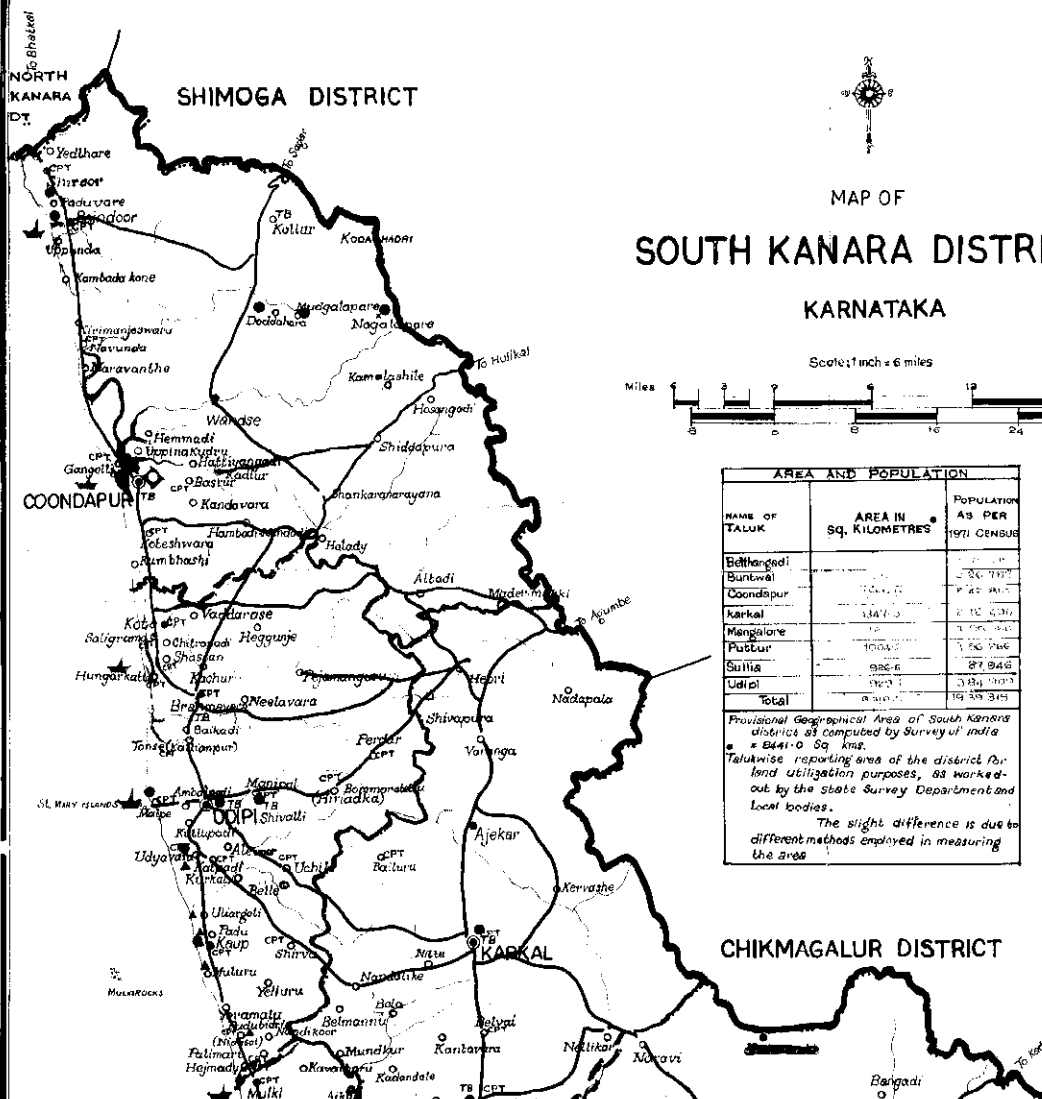


References	
District boundary	---
Taluk boundary	- - - -
District Head quarters	○
Taluk Headquarters	○
Ports	⊙
Other Places	●
National Highways	—+—+—+—
State Highways	—+—+—
Major District Roads	—+—
Broad-gauge Railway line	====
Metre-gauge Railway line	++++
Hills	▲
Rivers and Streams	~~~~~

Prepared by: Shankar, M.J., Compared by: J. Kannaya.

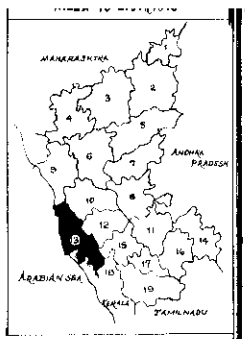
(C.S.V. HALLIAR)
For Director of Survey Settlement
and Land Records, Bangalore

December 3
1973



MAP OF SOUTH KANARA DISTRICT KARNATAKA

Scale: 1 inch = 6 miles



- 1 BIDAR
- 2 GULBARGA
- 3 SHIMOGA
- 4 BELGAUM
- 5 RAICHUR
- 6 DHARWAR
- 7 BELLARY
- 8 CHITRADURGA
- 9 NORTH KANARA
- 10 SHIMOGA
- 11 TUMKUR
- 12 CHIKMAGALUR
- 13 SOUTH KANARA
- 14 MANGALURU
- 15 HASSAN
- 16 BANGALORE
- 17 MANDYA
- 18 COORG
- 19 MYSORE

AREA AND POPULATION		
NAME OF TALUK	AREA IN Sq. KILOMETRES	POPULATION AS PER 1971 CENSUS
Bethangadi	100.0	1,20,000
Buntwal	100.0	1,20,000
Coondapur	100.0	1,20,000
Karkal	100.0	1,20,000
Mangalore	100.0	1,20,000
Puttur	100.0	1,20,000
Sullia	100.0	1,20,000
Udupi	100.0	1,20,000
Total	800.0	9,60,000

*Provisional Geographical Area of South Kanara district as computed by Survey of India = 8441.0 Sq. kms.
Talukwise reporting area of the district for land utilization purposes, as worked-out by the State Survey Department and Local bodies.
The slight difference is due to different methods employed in measuring the area.*

- ### REFERENCES
- 1 State Boundary
 - 2 District Boundary
 - 3 Taluk Boundary
 - 4 District Headquarters
 - 5 Sub-Divisional Headquarters
 - 6 Taluk Headquarters
 - 7 Hobli (Pirka) or Revenue circle Headquarters
 - 8 Ports
 - 9 Other Places
 - 10 Combined Post and Telegraph Offices
 - 11 Travelling/Inspection Bungalows
 - 12 Industrial and Commercial centres
 - 13 Fertiliser Plant site (Panambur)
 - 14 Important roads
 - 15 Rivers
 - 16 Minerals :-
Bauxite
Other minerals

